

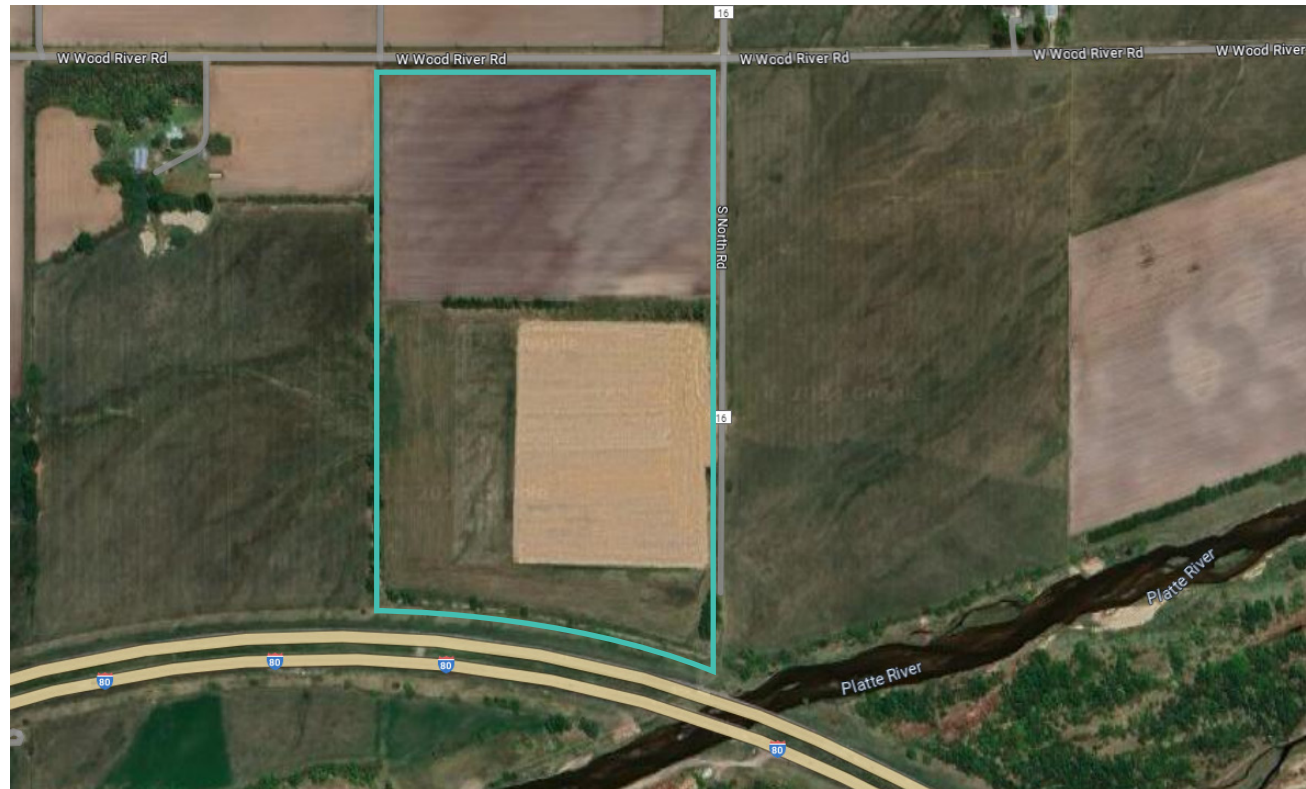
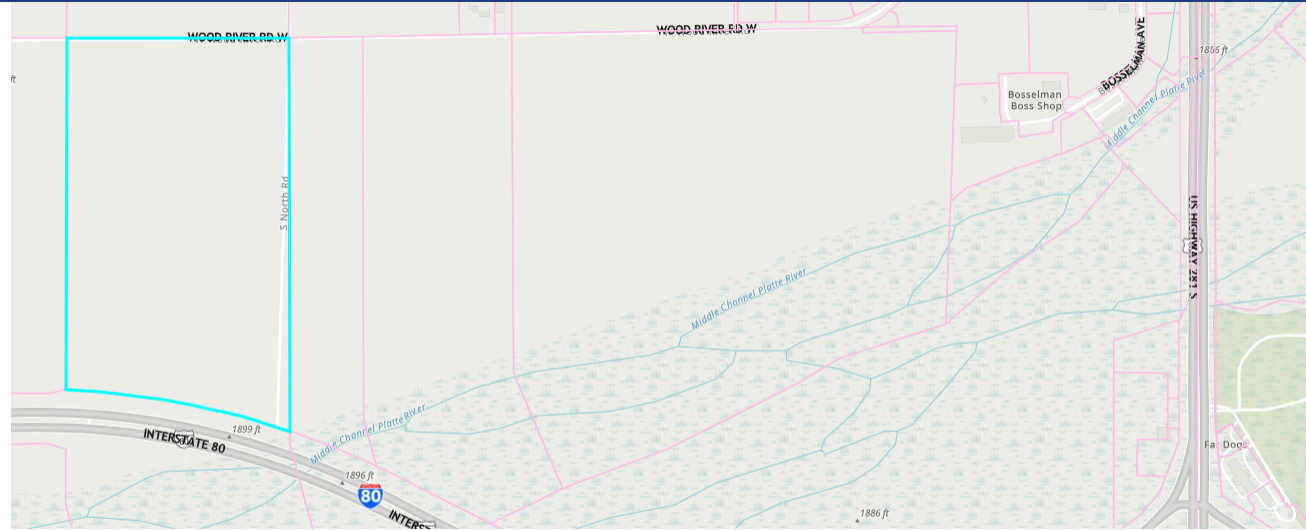
LAND FOR SALE

West Wood River Road | Grand Island, NE 68803

BOSSELMAN
PROPERTIES

Listing Price: Call for Pricing
Premises: 63.74 acres
Market: Grand Island
County: Hall
Submarket: Grand Island
Utilities: To site

- Interstate 80 Frontage



Contact



Brian Fausch
308-218-2401
brian.fausch@bosselman.com

1607 S Locust St., STE A
Grand Island, NE 68802-4905
bosselman.com | 308-382-5501